



North Carolina Department of Public Safety

Prevent. Protect. Prepare.

Pat McCrory, Governor

Frank L. Perry, Secretary

MEMORANDUM

To: Chairs of Joint Legislative Oversight Committee on Justice and Public Safety

From: Frank L. Perry, Secretary, NC DPS
Gregory K. Baker, Commissioner of Law Enforcement, NC DPS

SUBJECT: Domestic Violence Homicide Report

Date: March 12, 2015

Pursuant to § 143B-901, The Department of Public Safety, in consultation with the North Carolina Council for Women/Domestic Violence Commission, the North Carolina Sheriffs' Association, and the North Carolina Association of Chiefs of Police, shall develop a reporting system and database that reflects the number of homicides in the State where the offender and the victim had a personal relationship, as defined by G.S. 50B-1(b). The information in the database shall also include the type of personal relationship that existed between the offender and the victim, whether the victim had obtained an order pursuant to G.S. 50B-3, and whether there was a pending charge for which the offender was on pretrial release pursuant to G.S. 15A-534.1. All State and local law enforcement agencies shall report information to the Department of Public Safety upon making a determination that a homicide meets the reporting system's criteria. The report shall be made in the format adopted by the Department of Public Safety. The Department of Public Safety shall report to the Joint Legislative Oversight Committee on Justice and Public Safety, no later than February 1 of each year, with the data collected for the previous calendar year. (2007-14, s. 2; 2014-100, ss. 17.1(g), (rr).)

North Carolina General Statute §143B-901, requires the North Carolina Department of Public Safety to report on Domestic Violence Related Homicides which have taken place in North Carolina. The Department of Public Safety working cooperatively with the North Carolina State Bureau of Investigation has assembled the following report.

If there are any questions regarding this report, please contact the NC DPS Governmental Affairs office at 919-733-2126.

MAILING ADDRESS:
4233 Mail Service Center
Raleigh, NC 27699-4233

Telephone: (919) 733-4060
Fax: (919) 733-8002



OFFICE LOCATION:
430 N. Salisbury Street
Suite 2056
Raleigh, NC 27603-5926
www.ncdps.gov



Report on Domestic Violence Related Homicides for Calendar Year 2014 Reporting Requirements and Implementation

Reporting Requirements

North Carolina General Statute 143B-901 directs all state and local law enforcement agencies to report specific information regarding domestic violence related homicides, to the NC Department of Public Safety. Pursuant to this statute, the NC State Bureau of Investigation has developed the Domestic Violence Related Homicide Report form, in consultation with the NC Council for Women/Domestic Violence Commission, the NC Sheriffs Association, and the NC Association of Chiefs of Police. Each law enforcement agency in North Carolina must complete a report for each domestic violence related homicide, committed within that agency's jurisdiction. The report is to be completed upon the filing of charges, or when charges would have been filed against the offender if other circumstances, (like the death of the offender) had not intervened. Reporting of domestic violence related homicides is an ongoing requirement for all state and local law enforcement agencies. The State Bureau of Investigation collects this information and reports it to the General Assembly, through the Secretary of the Department of Public Safety.

NC General Statute 143B-901

§ 143B-901. Reporting system and database on certain domestic-violence-related homicides; reports by law enforcement agencies required; annual report to the General Assembly.

The Department of Public Safety, in consultation with the North Carolina Council for Women/Domestic Violence Commission, the North Carolina Sheriffs' Association, and the North Carolina Association of Chiefs of Police, shall develop a reporting system and database that reflects the number of homicides in the State where the offender and the victim had a personal relationship, as defined by G.S. 50B-1(b). The information in the database shall also include the type of personal relationship that existed between the offender and the victim, whether the victim had obtained an order pursuant to G.S. 50B-3, and whether there was a pending charge for which the offender was on pretrial release pursuant to G.S. 15A-534.1. All State and local law enforcement agencies shall report information to the Department of Public Safety upon making a determination that a homicide meets the reporting system's criteria. The report shall be made in the format adopted by the Department of Public Safety. The Department of Public Safety shall report to the Joint Legislative Oversight Committee on Justice and Public Safety, no later than February 1 of each year, with the data collected for the previous calendar year. (2007-14, s. 2; 2014-100, ss. 17.1(g), (rr).)

Report on Domestic Violence Related Homicides for Calendar Year 2014

Statistics

There were 119 victims (and 116 offenders) of domestic violence related homicide during calendar year 2014. Reports received for 2014 events also catalogued 116 offenders.

Additional information reported is as follows:

- ◆ 73 victims were female
- ◆ 46 victims were male

- ◆ 96 offenders were male
- ◆ 20 offenders were female

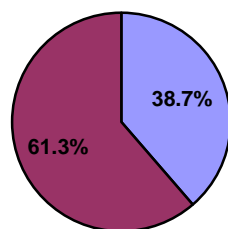
- ◆ Five of the 119 victims (4.2%) had previously taken out protective orders when the homicide occurred. Three of those protective orders were current when the homicide occurred.

- ◆ Two offenders (1.7%) were participating in a pre-trial release program, for a crime of domestic violence, when the homicide occurred.

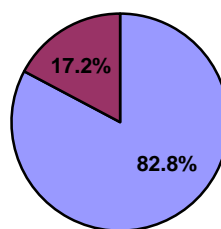
Information in this report represents data submitted to the SBI by state and local law enforcement agencies as of 2 March 2015. Offender count may differ from the victim count, because single victims may have more than one offender and one offender might have multiple victims.

Gender Percentages for Reported Data

Victim Gender				Offender Gender			
Female		Male		Female		Male	
Count	% of Total	Count	% of Total	Count	% of Total	Count	% of Total
73	61.3	46	38.7	20	17.2	96	82.8



■ Male ■ Female



■ Male ■ Female

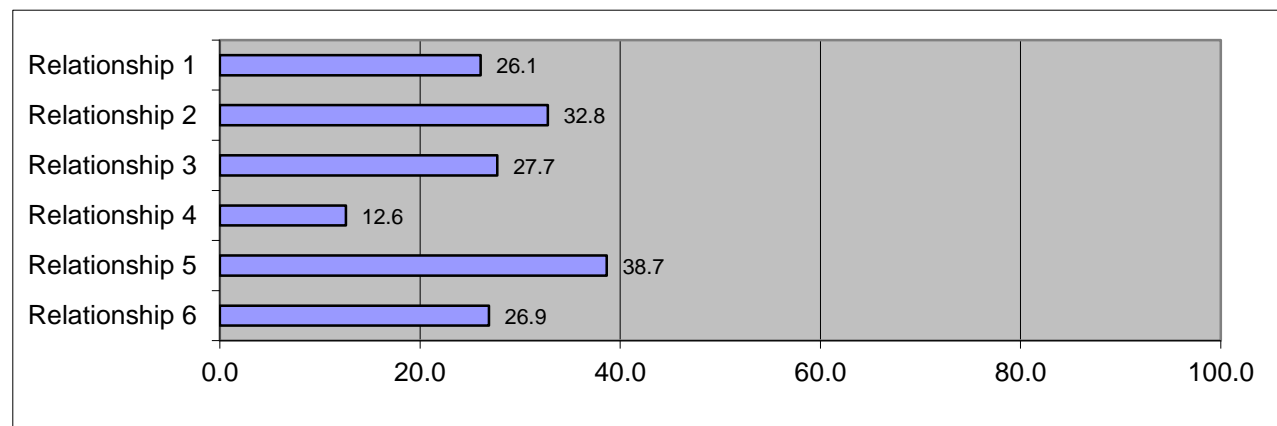
Number of Domestic Violence Related Homicides, 2009-2014

Year	2009	2010	2011	2012	2013	2014
DV Homicides	99	107	106	122	108	119

Relationships Between Victim and Offender, as a Percent of Total Reports in 2014

Relationships Defined in G.S. 50B-1(b)

R1		R2		R3		R4		R5		R6	
Count	% Tot	Count	% Tot	Count	% Tot	Count	% Tot	Count	% Tot	Count	% Tot
31	26.1	39	32.8	33	27.7	15	12.6	46	38.7	32	26.9



Relationship 1

Current or former spouses

Relationship 2

Persons of opposite sex who live together, or have lived together

Relationship 3

Related as parents and children, including others acting in loco parentis to a minor child, or as grandparents and grandchildren

Relationship 4

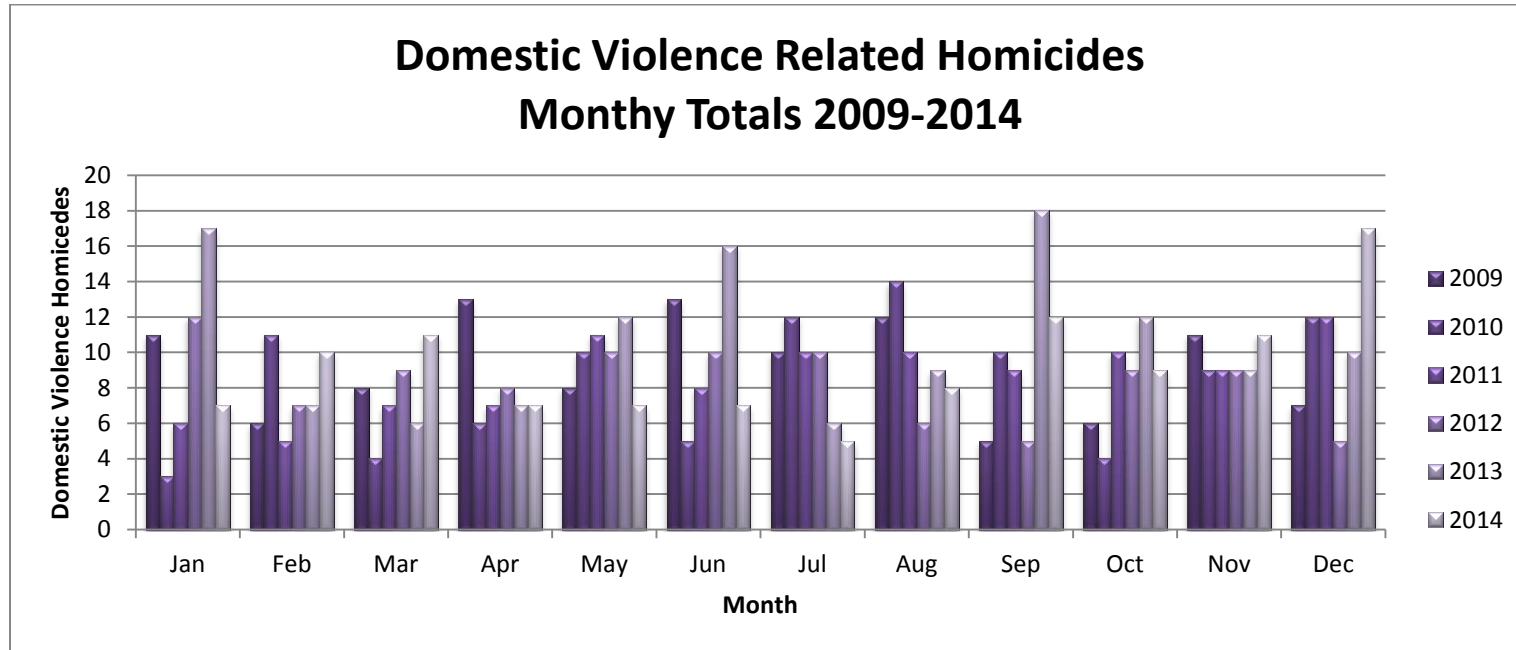
Have a child in common

Relationship 5

Current or former household members

Relationship 6

Persons of the opposite sex who are in a dating relationship or have been in a dating relationship. A dating relationship is one wherein the parties are romantically involved over time, and on a continuous basis, during the course of the relationship. A casual acquaintance or ordinary fraternization between persons in a business or social context is not a dating relationship.



	Jan	Feb	Mar	Apr	May	Jun	Jul	Aug	Sep	Oct	Nov	Dec
2009	11	6	8	13	8	13	10	12	5	6	11	7
2010	3	11	4	6	10	5	12	14	10	4	9	12
2011	6	5	7	7	11	8	10	10	9	10	9	12
2012	12	7	9	8	10	10	10	6	5	9	9	5
2013	17	7	6	7	12	16	6	9	18	12	9	10
2014	7	10	11	7	7	7	5	8	12	9	11	17

Number of Domestic Violence Related Homicides, By County 2009 - 2014

County	2009	2010	2011	2012	2013	2014
Alamance	3	1	0	0	1	0
Alexander	0	0	1	0	0	2
Alleghany	0	0	0	0	0	1
Anson	1	0	0	0	2	1
Ashe	0	1	0	0	0	1
Avery	0	0	1	0	0	0
Beaufort	0	3	0	0	1	2
Bladen	2	1	0	1	1	1
Brunswick	0	1	1	2	0	1
Buncombe	3	2	5	3	8	2
Burke	0	2	1	2	0	4
Cabarrus	1	1	1	2	1	6
Caldwell	3	0	2	0	3	1
Carteret	0	0	0	0	0	1
Caswell	0	0	0	2	0	0
Catawba	1	2	3	4	1	1
Chatham	0	0	2	0	0	0
Cherokee	0	0	0	2	0	0
Cleveland	1	1	0	2	0	2
Columbus	1	2	1	2	3	0
Craven	2	0	0	1	0	0
Cumberland	1	1	5	4	0	6
Currituck	0	1	2	0	0	1
Dare	0	0	0	1	0	0
Davidson	0	4	0	0	1	3
Davie	0	1	1	1	0	2
Duplin	0	1	1	1	0	0
Durham	4	3	10	4	6	5
Edgecombe	2	1	1	1	0	4
Forsyth	3	3	6	2	3	4
Franklin	3	1	1	0	2	0
Gaston	2	5	4	0	1	2
Gates	1	0	0	0	0	0
Graham	0	0	0	1	0	0
Granville	0	1	1	0	0	2
Guilford	3	4	7	3	11	8
Halifax	1	0	0	0	0	0
Harnett	2	5	1	4	5	0
Haywood	0	2	1	2	0	2
Henderson	0	0	1	4	4	1
Hertford	0	1	0	1	0	0
Hoke	0	2	1	1	0	0
Iredell	2	1	1	0	2	1
Jackson	0	0	1	0	0	0
Johnston	0	3	0	0	1	2

Number of Domestic Violence Related Homicides, By County 2009 - 2014

County	2009	2010	2011	2012	2013	2014
Lee	0	1	1	0	2	0
Lenoir	0	0	1	0	2	0
Lincoln	0	0	0	1	1	1
Madison	0	0	0	3	0	0
Martin	1	0	0	0	0	0
McDowell	1	1	0	1	1	2
Mecklenburg	8	12	12	8	7	9
Montgomery	0	0	0	0	0	0
Moore	3	1	1	1	0	0
Nash	0	0	2	2	2	0
New Hanover	2	2	2	3	1	1
North Hampton	0	0	1	0	0	0
Onslow	3	6	3	2	3	3
Orange	0	0	0	1	0	0
Pamlico	0	0	0	0	0	0
Pasquotank	0	0	0	1	0	0
Pender	0	0	0	1	1	0
Person	2	4	0	0	0	0
Pitt	2	0	1	3	2	1
Polk	0	0	1	0	0	0
Randolph	3	0	1	2	2	1
Richmond	1	0	0	3	0	2
Robeson	5	2	0	5	2	5
Rockingham	0	3	1	1	0	0
Rowan	3	2	1	1	2	2
Rutherford	0	0	4	1	2	0
Sampson	5	0	0	2	1	2
Scotland	3	0	0	4	0	3
Stanly	2	1	0	0	0	0
Stokes	1	0	1	1	1	0
Surry	1	1	0	2	0	1
Swain	0	3	1	0	2	0
Transylvania	0	0	0	0	0	1
Union	1	0	0	2	0	2
Vance	1	0	1	1	1	4
Wake	5	5	4	11	8	8
Warren	0	0	0	1	4	1
Watauga	1	1	0	0	0	0
Wayne	0	1	2	0	1	1
Wilkes	0	1	0	0	4	1
Wilson	2	2	1	2	0	1
Yadkin	1	1	0	0	0	0
Yancey	0	0	0	0	1	0
(* Totals Next Page *)						

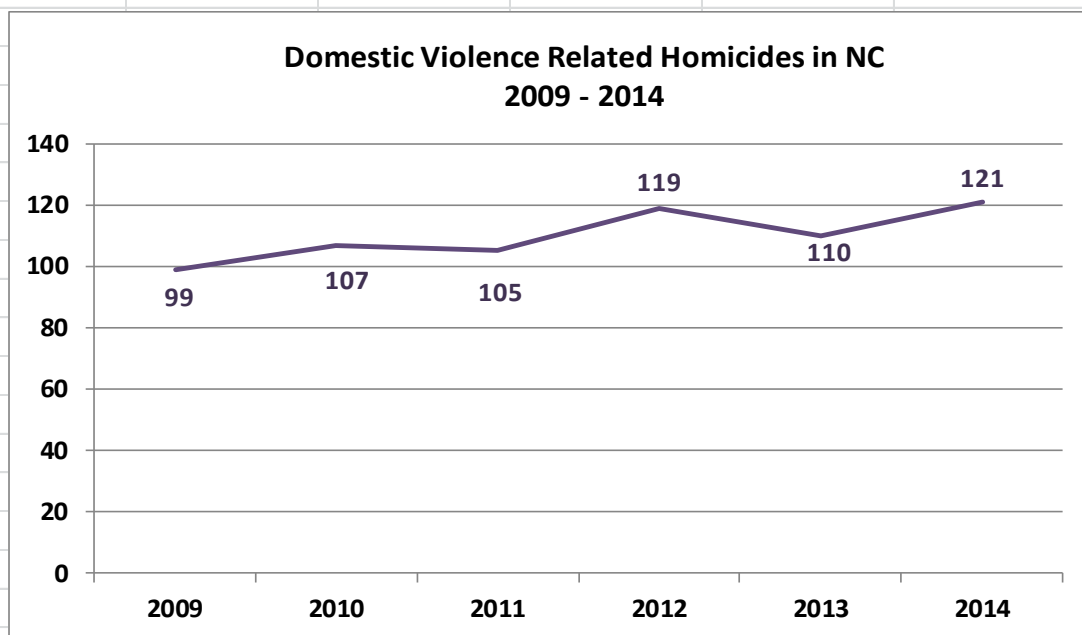
Number of Domestic Violence Related Homicides, By County 2009 - 2014

	2009	2010	2011	2012	2013	2014
TOTALS	99	107	105	119	110	121

¹ 119 domestic violence homicides were reported through December 2014. Since that date, subsequent investigations have uncovered two additional domestic violence related homicides.

² 104 domestic violence homicides were reported in the original 2011 report. Since that report, subsequent investigations uncovered one additional domestic violence homicide.

³ 98 domestic violence homicides were reported in the original 2009 report. Since that report, subsequent investigations uncovered one additional domestic violence homicide.



APPENDIX

DOMESTIC VIOLENCE RELATED HOMICIDE REPORT FORM	9
ANNUAL HATE CRIME AND DOMESTIC VIOLENCE HOMICIDE REPORT FORM	10

Domestic Violence Related Homicide Report

INSTRUCTIONS

Pursuant to NC Gen. Stat. § 114-2.7, complete this form for homicides in your jurisdiction where there is a personal relationship as defined in NC Gen. Stat. § 50B-1(b) between the victim and the offender. This form should be completed upon the filing of charges, or when charges would have been filed against the offender but for other circumstances (i.e. the offender is now deceased). Complete one form for each qualifying homicide. You may file directly online at WWW.NCSBI.GOV → Crime Statistics → UCR → Crime Reporting Partners HomePage → FORMS or email form to DVhomicidereport@ncdoj.gov. If you are unable to submit electronically, fax to (919) 662-4485. If you have any questions regarding this form, contact SBI Crime Reporting either toll-free (866) 955-4SBI or direct (919) 662-4509, ext. 6322.

Reporting Agency		Agency URL
OCA	Agency Contact Name	Agency Contact Phone
Date of Arrest:		Date of Offense:

RELATIONSHIP BETWEEN VICTIM AND OFFENDER

Victim's Relationship to Offender Please check all that apply. Example: The victim and the offender are ____.

- ☐ Current or former spouses
☐ Persons of opposite sex who live together or have lived together
☐ Related as parents and children, including others acting in loco parentis to a minor child, or as grandparents and grandchildren
☐ Have a child in common
☐ Current or former household members
☐ Persons of the opposite sex who are in a dating relationship or have been in a dating relationship. A dating relationship is one wherein the parties are romantically involved over time and on a continuous basis during the course of the relationship. A casual acquaintance or ordinary fraternization between persons in a business or social context is not a dating relationship.

Gender of the Victim: ☐ MALE ☐ FEMALE * Complete one report PER VICTIM

Gender of the Offender: ☐ MALE (if multiple, enter # ____) ☐ FEMALE (if multiple, enter # ____)

PROTECTIVE ORDER

Had a Protective Order been issued pursuant to G.S. § 50B-3 to the victim against the offender?

☐ YES ☐ NO

If yes, was it current?

☐ YES ☐ NO

Were firearms ordered surrendered pursuant to the protective order (G.S. § 50B-3.1)?

☐ YES ☐ NO

OFFENDER INFORMATION

Was the Offender on pretrial release pursuant to G.S. § 15A-534.1 for a crime of domestic violence?

☐ YES ☐ NO

If yes, for what charge? (Please list statute number and short title)

Was the victim of the homicide also the victim of the prior crime for which the offender was on pretrial release?

☐ YES ☐ NO

Signature of Person Completing Report

Title



**NORTH CAROLINA STATE BUREAU OF INVESTIGATION
CRIME REPORTING UNIT**

**HATE CRIME - DOMESTIC VIOLENCE HOMICIDE – DEADLY FORCE
Offenses Known to Law Enforcement**

2014 Summary Report

This report, as required by the Federal Hate Crime Statistics Act of 1990 and North Carolina General Statute § 114-10, is to be completed once a year and forwarded to the State Bureau of Investigation's Crime Reporting Unit by January 23rd. This report is to indicate the total number of hate crimes, domestic violence homicides and deaths as a result of deadly force that occurred in your jurisdiction during the year.

INSTRUCTIONS

- ▶ Report the number of **hate crimes** and **domestic-violence-related homicides** reported to your agency for EACH MONTH.
- ▶ Report the number of **deaths resulting from the use of deadly force** by a law enforcement officer in your agency during the course and scope of their official duties.
- ▶ If there are no incidents in any month, **you must report "0" for that month for each type incident**. Do not leave any month blank.
- ▶ If you have any hate crimes or domestic-violence-related homicides and have not already reported these, you must submit a corresponding Hate Crime Incident Report or Domestic-Violence-Related Homicide Report along with this form.
- ▶ If no incidents occurred, submit only this COMPLETED Summary Report to:

Submit to: NC State Bureau of Investigation Crime Reporting Unit
P.O. Box 29500
Raleigh, NC 27626
Fax: (919) 862-4485

Agency Name: _____

ORI: _____

REMEMBER! If you had no incidents in a month, you must report "0" for that month for each column.

Month	2014 Number of Hate Crimes	2014 Number of DV Homicides	2014 Number of Deaths by Deadly Force	Month	2014 Number of Hate Crimes	2014 Number of DV Homicides	2014 Number of Deaths by Deadly Force
January				July			
February				August			
March				September			
April				October			
May				November			
June				December			

Name of Preparer/Title _____

Contact Phone Number _____ Date _____